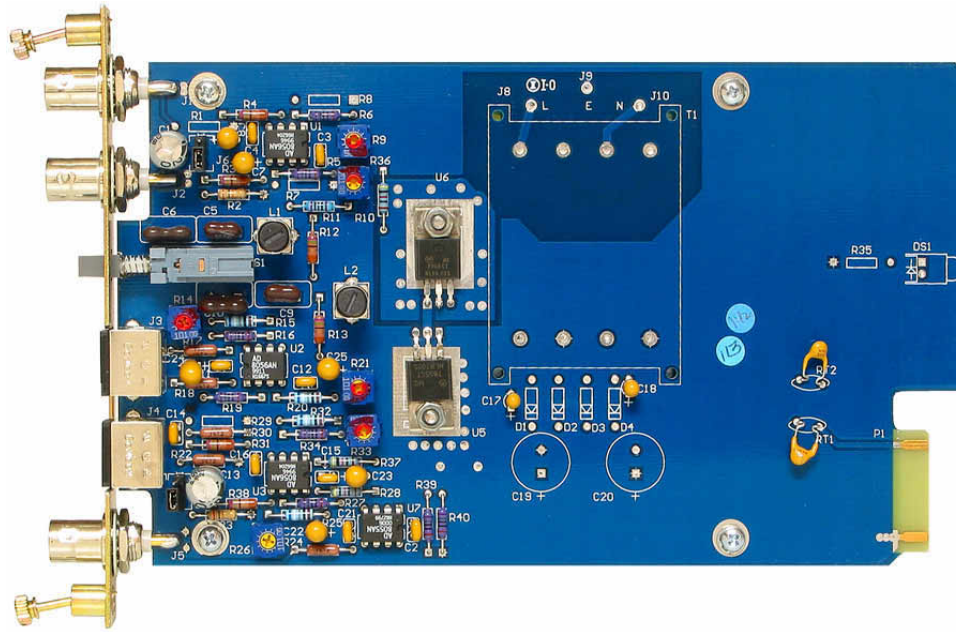


**NTSC/PAL TO Y/C : Y/C TO NTSC/PAL MODULAR
TRANSCODER - TYC2115**



FEATURES

- High quality, low cost
- NTSC or PAL to Y/C : Y/C to NTSC or PAL transcoding
- 1 slot 2100 series module

SPECIFICATIONS

INPUTS

One set COmposite looping
NTSC/PAL and Y/C

Connectors BNC for NTSC/PAL, 4 pin
"S-video" for Y/C

OUTPUTS

One each Composite NTSC/PAL & Y/C

Bandwidth 5 MHz

Differential Phase < 0.1° @ 3.58 MHz

Differential Gain < 0.2% @ 3.58 MHz

Freq. Response ±10%, to 6 MHz

Accuracy ± 2.5 IRE, ± 2.5° small boxes
on vectorscope

Connectors BNC for NTSC, 4 pin
"S-Video" for Y/C

Prices and Specifications are subject to change without notice.