

40

**MULTISTANDARD  
REMULTIPLEXER  
SFN ADAPTER  
AND MIP INSERTER**





#### PRINCIPALI CARATTERISTICHE:

- > Affasciamento e ri-affasciamento di segnali DVB e ATSC.
- > Data rate fino a 155 Mbits/s.
- > Adattatore SFN integrato.
- > Ingressi sincroni, asincroni e mesio-sincroni.
- > Generazione del MIP per applicazioni SFN.
- > Funzione drop-insert.
- > PCR restamping.
- > Funzione di editing delle tabelle DVB.
- > Funzione di ricalcolo automatico delle tabelle DVB.
- > Gestione di filtro e ri-mappatura dei PID.
- > Misura dettagliata del bit-rate in ingresso.
- > Adattamento del bit-rate di uscita ai sistemi di distribuzione terrestre, satellitare e via cavo.
- > Interfaccia grafica di gestione via web.

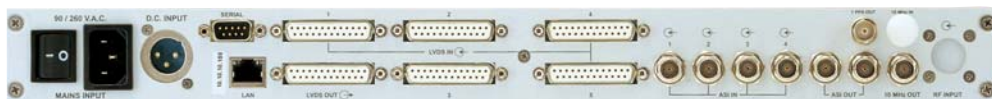
#### MAIN FEATURES:

- > Multiplexing and re-multiplexing of DVB and ATSC signals.
- > Data rate up to 155 Mbits/s.
- > Integrated SFN adapter.
- > Synchronous, asynchronous and mesio-synchronous inputs.
- > MIP generation for SFN operation.
- > Drop-insert function.
- > PCR restamping.
- > DVB tables editing.
- > Automatic DVB table editing function.
- > PID filtering / re-mapping capability.
- > Detailed Bit rate measurement of incoming services.
- > Output bit rate adaptation to Terrestrial, Satellite or Cable delivery services.
- > Web based graphic interface.

#### CARACTERÍSTICAS PRINCIPALES:

- > Multiplexing y re-multiplexing de señales DVB y ATSC.
- > Data rate hasta 155 Mbits/s.
- > Adaptador SFN integrado.
- > Entradas síncronas, asíncronas y mesio-síncronas.
- > Generación del MIP para aplicaciones SFN.
- > Función drop-insert.
- > PCR restamping.
- > Función de edición de las tablas DVB.
- > Función de recálculo automático de las tablas DVB.
- > Gestión de filtro y re-mapeo de los PID.
- > Medida detallada del bit-rate de entrada.
- > Adaptación del bit-rate de salida a los sistemas de distribución terrestre, por satélite y por cable.
- > Interfaz gráfica de gestión vía web.

#### XBT 500 REMULTIPLEXER



#### XBT 500 REAR VIEW.

Questo versatile re-multiplexer/SFN adapter, che include anche un inseritore di MIP e di tabelle SI/PSIP, dispone di 9 ingressi e permette la creazione di bouquets multi-programma e l'inserimento di programmi locali in un pacchetto esistente.

Un avanzato sistema di analisi dei Transport Streams in ingresso, combinato con le intuitive funzioni di filtro e processamento, consente una rapida configurazione dei servizi da combinare in uscita.

La gestione dell'apparato viene effettuata per mezzo di una semplice e pratica interfaccia grafica utente (GUI) basata su tecnologia Java attraverso un browser web standard ed una interfaccia TCP/IP riducendo drasticamente i tempi di messa in servizio e di formazione del personale.

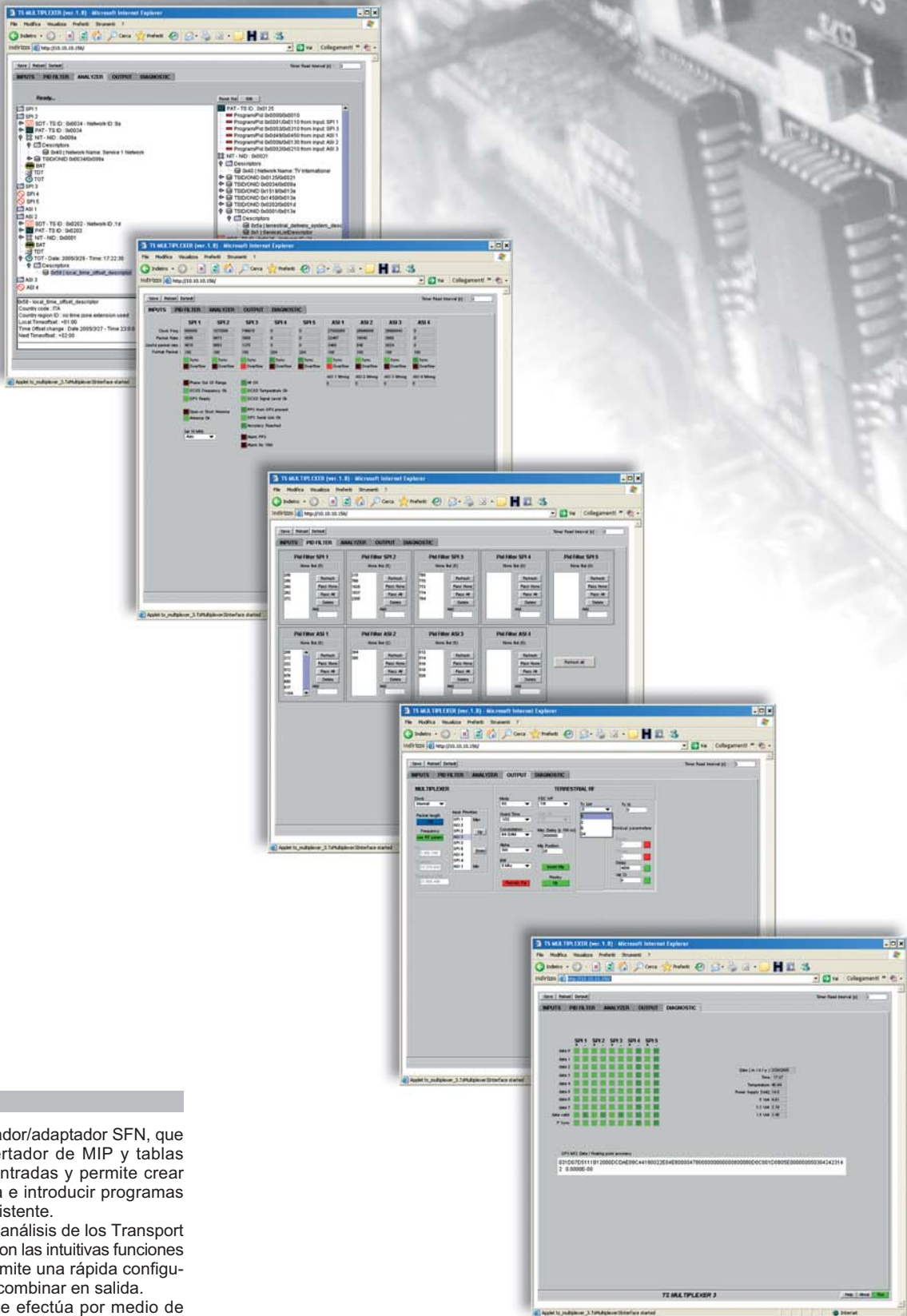
In combinazione con il ricevitore GPS opzionale, installabile all'interno dello stesso chassis, questo re-multiplexer diventa uno strumento indispensabile per la gestione di reti SFN e può essere impiegato per installazioni di tipo fisso o mobile per applicazioni di trasmissione satellitare, terrestre e via cavo.

*This versatile re-multiplexer/SFN adapter, which also includes an MIP and SI/PSIP table inserter, has 9 inputs and allows for the creation of multi-program bouquets as well as the entry of local packets in an existing one.*

*An advanced system of Transport Streams Analysis at input, combined with the intuitive functions of filtering and processing, allows a rapid configuration of services to combine at output.*

*The unit is operated by means of a simple and practical user interface (GUI) based on Java technology through a standard Web browser and TCP/IP interface, considerably reducing the time for system installation and personnel training.*

*Combined with the optional GPS receiver, which can be installed in the same chassis, this re-multiplexer becomes a necessary instrument for SFN network management and can be used in fixed or mobile installations for satellite, terrestrial or cable broadcasting applications.*



Este versátil re-multiplexador/adaptador SFN, que también incluye un insertador de MIP y tablas SI/PSIP, dispone de 9 entradas y permite crear bouquets multi-programa e introducir programas locales en un paquete existente.

Un avanzado sistema de análisis de los Transport Streams entrantes, junto con las intuitivas funciones de filtro y procesado, permite una rápida configuración de los servicios a combinar en salida.

La gestión del aparato se efectúa por medio de una sencilla y práctica interfaz gráfica usuario (GUI) basada en tecnología Java a través de un navegador web estándar y una interfaz TCP/IP reduciendo drásticamente los tiempos de puesta en servicio y formación del personal.

Combinado con el receptor GPS opcional, instalable dentro de la misma carcasa, este re-multiplexador se convierte en un instrumento indispensable para la gestión de redes SFN y se puede utilizar para instalaciones de tipo fijo o móvil para aplicaciones de transmisión por satélite, terrestre y por cable.

# MULTISTANDARD REMULTIPLEXER SFN ADAPTER AND MIP INSERTER

DIGITAL

## TECHNICAL CHARACTERISTICS

### INPUTS

Number of DVB inputs	4 x ASI + 5 x LVDS Transport streams
ASI Input connector	BNC
ASI Input impedance	75 $\Omega$
LVDS Input connector	Sub-D 25
LVDS Input impedance	100 $\Omega$
Frequency reference input	10 MHz, BNC 50 $\Omega$
Time reference input	1 PPS, BNC 50 $\Omega$
Type of inputs	Synchronous, asynchronous and mesio synchronous

### OUTPUTS

Number of outputs	2 x ASI + 1 x LVDS
ASI output connector	BNC
ASI output impedance	75 $\Omega$
LVDS output connector	Sub-D 25
LVDS output impedance	100 $\Omega$
Output TS bit rate	Up to 155 Mbits/s

### TRANSPORT STREAM PROCESSING

Standard multiplexing support
PID filtering / re-mapping capability
Internal SFN adapter
MIP generation for SFN operation
SI / PSIP table inserter
SI management
PCR restamping
DVB Table editing
Detailed Bit rate measurement of incoming services
Output bit rate adaptation to terrestrial, satellite or cable delivery services
Error monitoring
Low delay on main signal
Drop insert functions

### GENERAL

Local control and monitoring	Extensive front panel control Local terminal on RS-232
Remote control and monitoring	Web based Java interface Telnet access via Ethernet
Operating temperature	-10°C to +45°C
Maximum relative humidity	90%, non condensing
Maximum operating altitude	2500 m a.s.l. (> 2500 m on request)
Power supply	90 to 264 V AC, 48 V DC
Dimensions	1 RU (19" rack)



## Screen Service

SCREEN SERVICE

BROADCASTING TECHNOLOGIES SpA  
Via G. Di Vittorio, 17 - 25125 Brescia - Italy  
Tel. +39 030 3582225 Fax +39 030 3582226  
info@screen.it - www.screen.it

SCREEN SERVICE AMERICA LLC

6095 NW 167th Street, Suite D-10, Miami, FL 33015  
Phone +1 (305) 826-2212 - Fax +1 (305) 826-2290  
USA Toll Free 1-888-522-0012  
info@screenservice.net - www.screenservice.net

*Specifications  
and characteristics  
are subject to  
change  
without notice.*