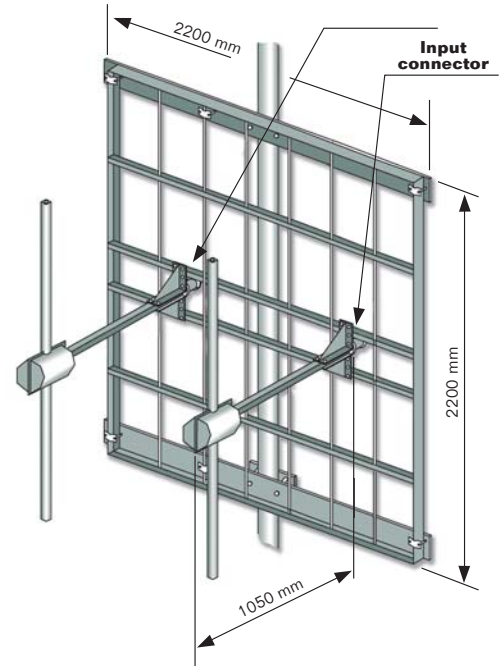


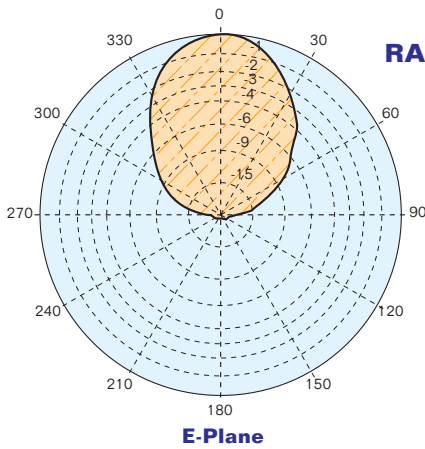
Model DPA2V

- Band II panel
- Broadband 87.5÷108 MHz
- Demountable
- Vertical polarization
- Directional pattern
- Suitable as a component in various array

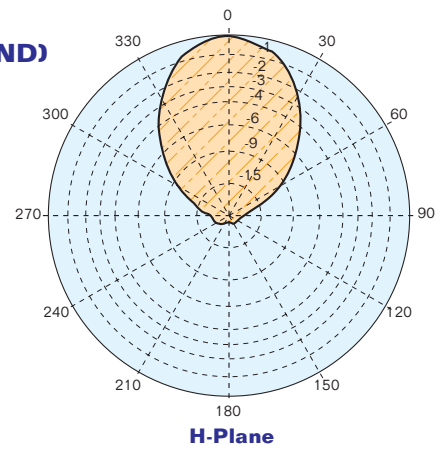


ELECTRICAL DATA	
Frequency range	87.5÷108 MHz
Impedance	50 Ohm
Connectors	Two input connectors Type N or 7/16" or 7/8" EIA
Max Power	2x800W (N) – 2x2KW (7/16") 2x3.5KW (7/8" EIA)
VSWR	≤ 1.25:1
Polarization	Vertical
Gain	7.5 dB (referred to half-wave dipole)
Half power beam width	E plane ± 35° H plane ± 32°
Lightning protection	All metal parts DC grounded

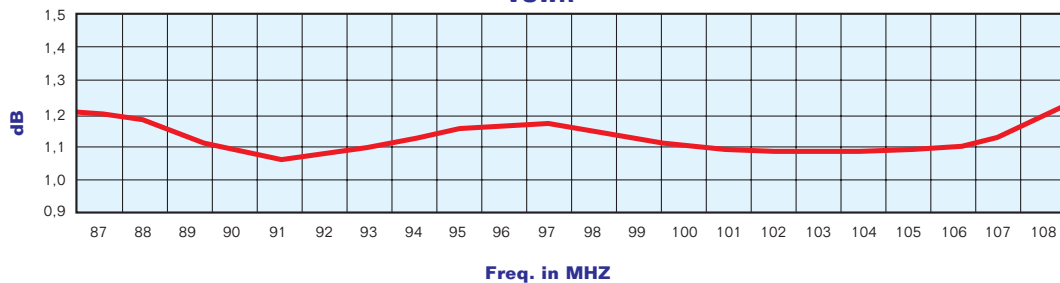
MECHANICAL DATA	
Dimensions	2200x2200x1050 mm
Weight	79 kg ref. stainless steel
Wind surface	0.90 m ² (side) 0.22 m ² (front)
Wind load	173,7 kg (front - wind speed at 160 km/h)
Max wind velocity	200 km/h.
Materials	Reflector: hot dip. galvanized Dipole: stainless steel Internal parts: passivated aluminium Radome: fiberglass (option)
Icing protection	Feed point radome (optional)
Radome	Optional
Mounting	With special pipe clamps 50÷110 mm dia.



RADIATION PATTERN (MID BAND)



VSWR

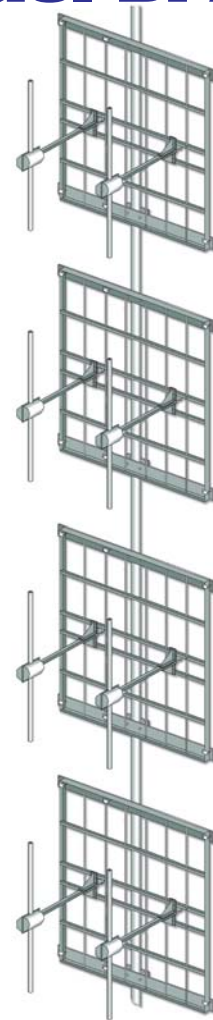


Radiations systems with DPA2V panel
Omnidirectional or directional pattern
Balanced or unbalanced splitting power
High power system
Broadband 87.5÷108 MHz

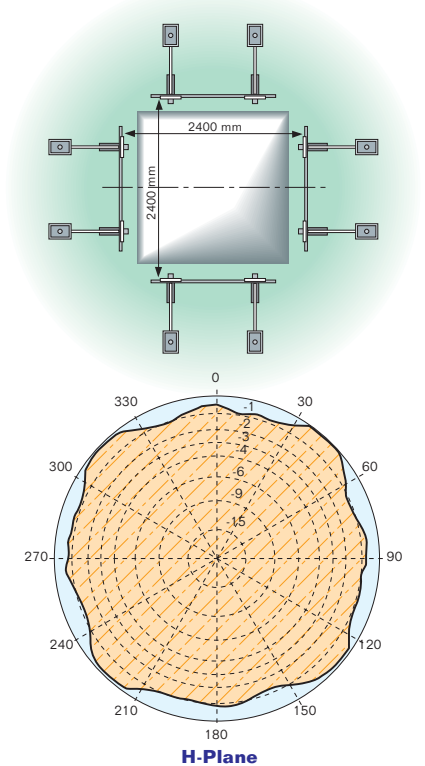
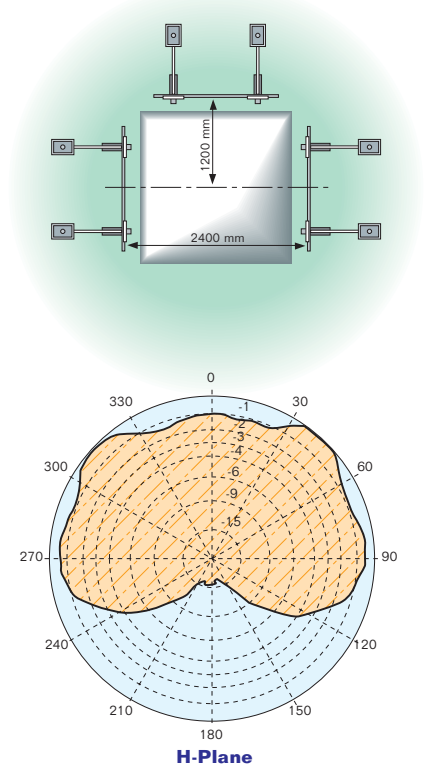
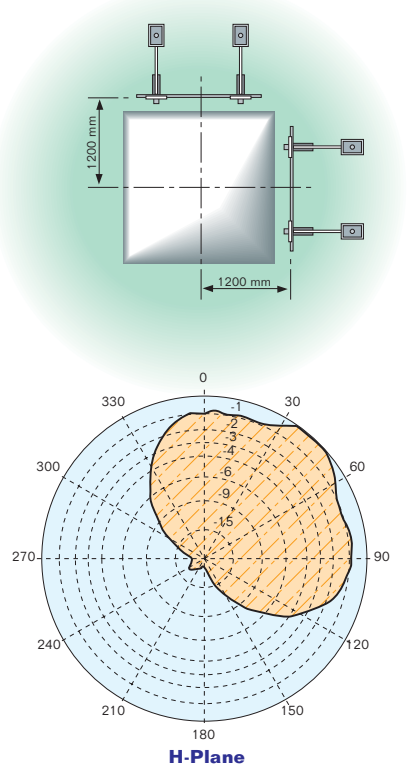
Model DPA2V

ELECTRICAL DATA	
Frequency range	87.5÷108 MHz
Impedance	50 Ohm
Connector	EIA flange according to system power rating
VSWR	≤ 1.25:1 Max
Polarization	Vertical
Gain	According to requirement
Horizontal pattern	Any type according to requirements
Vertical pattern	Null fill, beam tilt and special requirements to order
Other facilities	The antenna system can be supplied in split feed with two equal half antennas. Each half can accept full power

MECHANICAL DATA	
Height of array	Subject to number of bays (refer to table)
Total net weight	Refer to table
Wind load	Refer to table
Pressurizable	Yes (on request)
Radome	Optional
Mounting hardware	Hot dip galvanized steel clamps
Shipping	As required



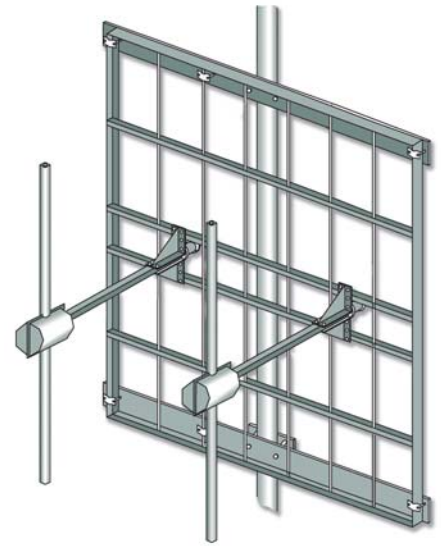
HORIZONTAL PATTERNS WITH 2, 3 AND 4 FACES AT 98 MHz



Model DPA2V

TECHNICAL DATA

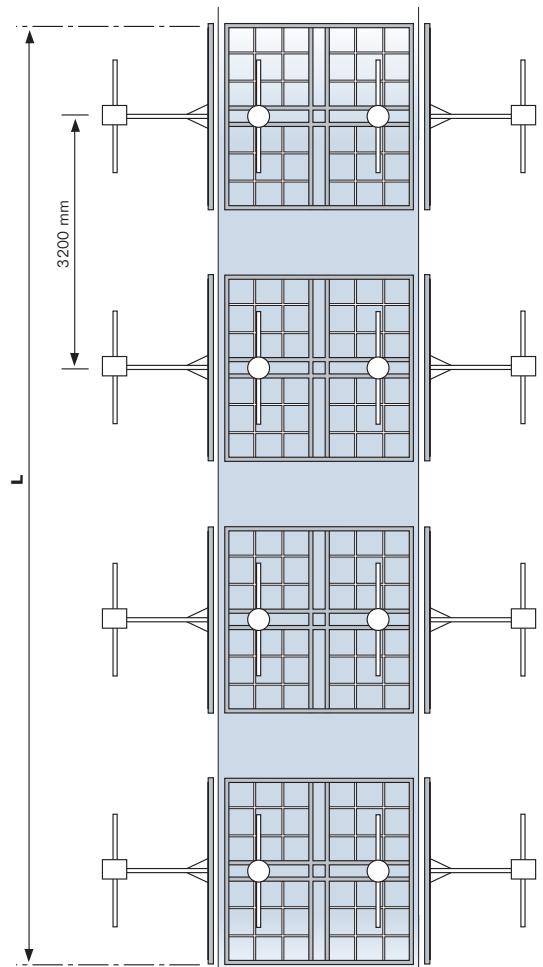
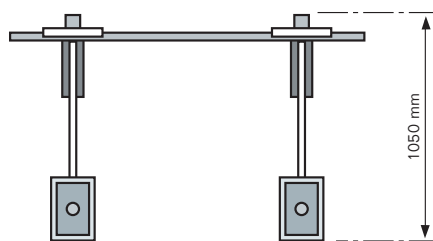
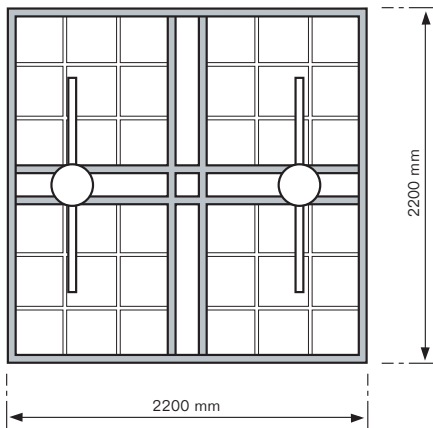
Number of bays	Panels per bay	Gain ¹		Weight ² kg	Antenna height L m	Wind load ³ (v=160 km/h) kg
		dB	times			
1	2	5.1	3.2	158	2.2	210
	3	3.1	2.0	237		259
	4	2.0	1.6	316		303
2	1	10.8	12.0	158	5.4	348
	2	8.1	6.5	316		402
	3	6.1	4.1	474		518
	4	5.2	3.3	632		606
4	1	13.9	25.5	316	11.8	695
	2	11.1	12.9	632		804
	3	9.3	8.5	984		1036
	4	8.1	6.5	1264		1212
6	1	15.5	35.5	474	18.2	1044
	2	12.9	19.5	984		1206
	3	10.8	12.0	1422		1554
	4	9.6	9.1	1896		1818
8	1	17.1	51.3	632	24.6	1390
	2	14.2	26.3	1264		1608
	3	12.1	16.2	1896		2072
	4	11.2	13.2	2528		2424



¹ Referred to a half wave dipole. Attenuation of connecting cables not taken into account.

² Without mounting hardware.

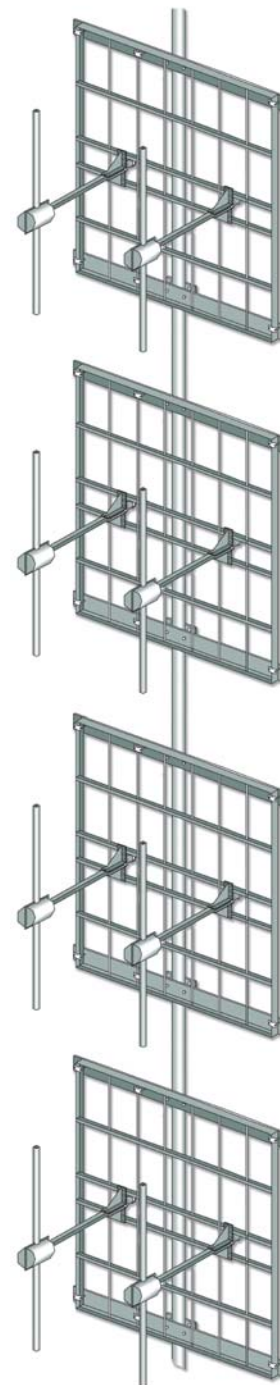
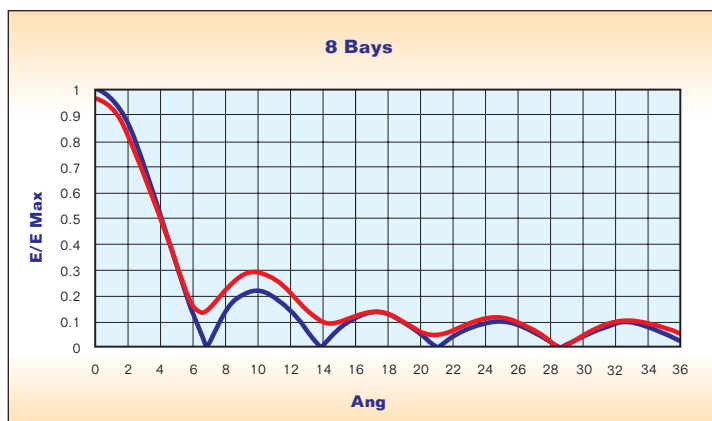
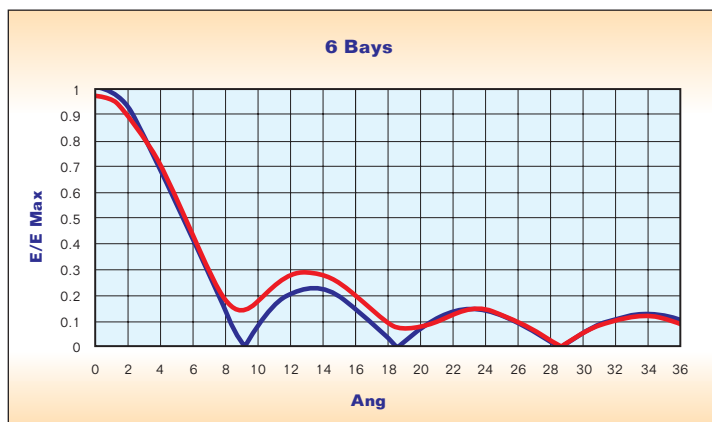
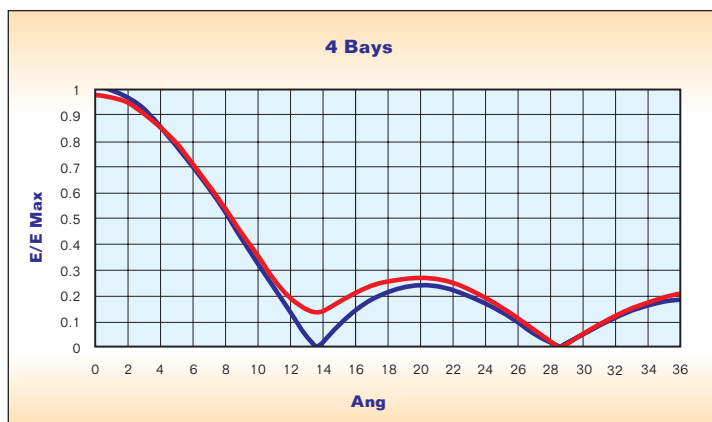
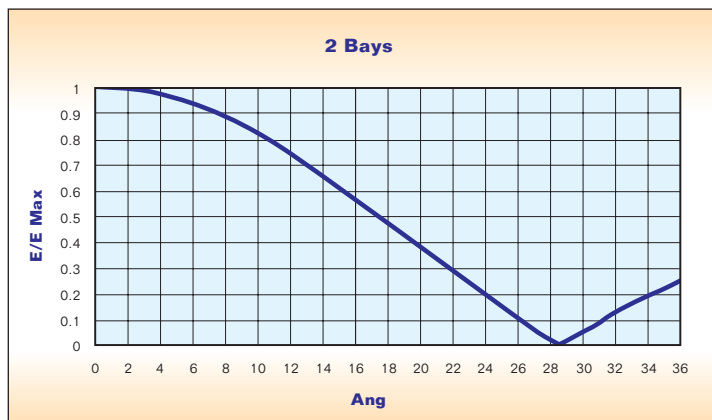
³ According to the tower type, for more details contact us.



"These specifications are subject to change without notice"

VERTICAL PATTERN

— Without null fill
— With null fill and beam tilt



- Gain is provided for vertical polarization.
- If the antenna is side mounted, the supporting structure will have a slight effect on the radiation pattern and VSWR.
- Vertical tower space, wind load and weight numbers given are typical. Actual values vary with the specific installation. Contact us for more details of your installation.
- Gain will be reduced if null fill, beam tilt or special wavelength spacing is provided.
- Antenna radiation aperture is the distance from the centre of the top bay to the centre of the bottom bay.
- Five ft (1.6m) of pipe required above the top bay and below the bottom bay for to protect from pattern interference by other antennas.
- Antenna wind load is calculated for 100 Mph (160Km/h) per EIA-222-C standard.

"These specifications are subject to change without notice"