

Contact: Trish Logue  
Moog QuickSet  
Phone: (847) 498-0700  
Fax: (847) 498-1258

3650 Woodhead Drive  
Northbrook, IL 60062  
www.quickset.com



## PRODUCT RELEASE

Moog QuickSet® announces the new **QPT-20 ICMS CR Pan & Tilt Positioner**  
**MSRP \$8,255**

The new QPT-20 ICMS CR utilizes the Stepper Sentry motor for wide, dynamic speed control, quick target acquisition and slow speed tracking.

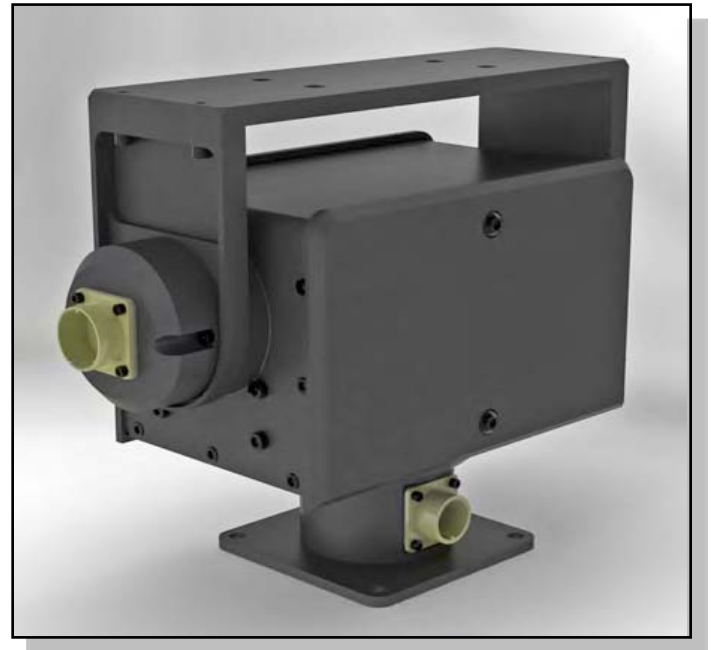
- 7-25HSA-MWS; Tilt Connector Port A; Load internally wired and controlled via MQS / Pelco D Protocols.
- 7-25HSB-MWS; Tilt Connector Port B; Load pass-through wired for direct customer access / control.
- 7-25HS0-MWS; Dual connector configuration. Port A and Port B wired.

### New Features to the QPT-20 ICMS CR:

- 20 lb. ft. load at specified rotation speeds
- Digital serial / Ethernet control interfaces
- Load pass-through wiring features
- Serial device communication
- Lens focus / zoom drivers
- Low repeatability error ( $\pm .05^\circ$ )
- Software controlled switching between RS232/422/485
- Protocols: Internet(IP), MQS PTCR96 and PelcoD

### Pan/Tilt Specifications:

Load Capacity	20 lb. ft. (27.1Nm) maximum
Operating Voltage	24VDC
Repeatability	$\pm 0.05^\circ$
Heaters	2.7A at 24VDC
Pan Speed	0.002° - 25° / s
Tilt Speed	0.001° - 8° / s @ 20 lb.ft.
Pan Rotation	360° Continuous
Tilt Rotation	180° ( $\pm 90^\circ$ )
Weight	15 lbs.
Base Connector	Mil-spec 32 pin 18 shell
Materials	Cast aluminum housing, stainless steel hardware, permanently sealed radial ball bearings



FOR IMMEDIATE RELEASE  
FEBRUARY 8<sup>TH</sup>, 2011  
MOOG QUICKSET