

Ingest and review all your MXF media

OpenCubeSD v2.0 is a new generation of cutting edge turnkey system to ingest and playback all of your media using the powerful metadata enabled MXF file format.

Today **OpenCubeSD v2.0** is unquestionably the best video/IT gateway to smooth the migration to various tapeless network architectures ensuring genuine interoperability in video media exchange with third party market solutions. Its MXF advanced support enables to completely get rid of transcoding and conversion constraints.

Based on an open architecture, fully scalable and compression format agnostic, **OpenCubeSD v2.0** is the answer to most of all Broadcast, Production and Post-production industries expectations.

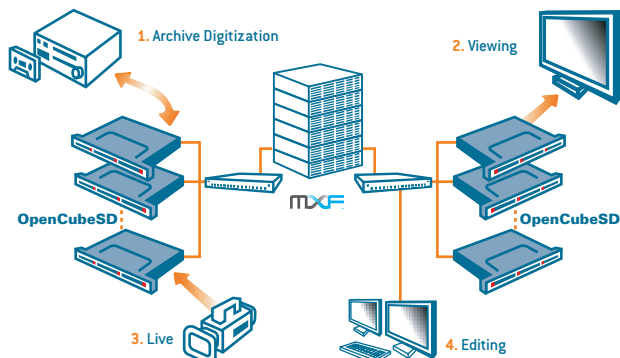
Whether it is for Video Tape Archive Migration, News feeds or Live shoots, or even for a hassle-free connection between production and post-production, the **OpenCubeSD** systems join performance with reliability for the best productivity in the brand new digital production workflow.

OpenCubeSD can be upgraded to HD!

New with version 2.0:

- > Powerful and easy to use GUI
- > Enhanced MXF support and interoperability
- > Full VTR emulation in record and playback modes
- > Better network performances

A scalable and expandable system

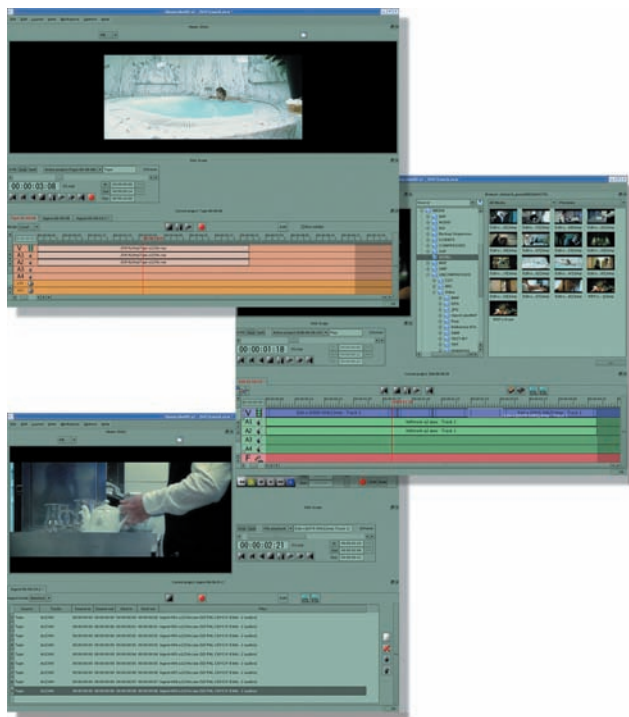


OpenCubeSD is completely independent from any compression and file format. During the digitization stage, one process enables to simultaneously ingest an SDI stream, encode it into DV or Mpeg2 formats, add DMS-1 metadata on the fly, wrap it into an MXF shell to drop it in real time on a local or distant storage.

1. **OpenCubeSD** enables to drive a VTR to digitize several streams for post-production or to automate video tape based archive migration. On the opposite, it offers the ability to report an MXF media onto a video tape.
2. **OpenCubeSD** allows to record video for News feeds or Live production shoots.
3. During or after the recording, MXF media can be viewed via SDI Interface.
4. Its open network architecture makes it the ideal gateway with the Editing systems. The MXF interoperability allows for seamless integration with third party NLEs.

A powerful Graphic Interface

OpenCubeSD is delivered with a handy and powerful graphic user interface. An intuitive project management offering different layouts enables to reach efficiently the required features.



Audio and video media edition is made simple thanks to a Timeline adapted to deal with cut/edit and conformation processes.

Video digitization is available via different functions, record on the fly, Timecode controlled capture, or EDL batch ingest.

Key Features:

Video I/O

- > SDI 1 channel Input/Output
- > DVI Output
- > 8 audio channels embedded in SDI
- > 8 AES/EBU channels (*)

File format

- > Bmp, Tga, Dpx, Cin, Yuv 4.2.2, Raw, Rgb, Sgi, Wave, Bwf, Aiff, Dv, Dif, MXF (*)

MXF (*)

- > MXF Op-1a DV25, DVCPro 25-50, IMX 30-40-50, Mpeg2 in record and playback modes
- > MXF Op-Atom DVCPro 25-50 in playback mode
- > MXF DMS-1 Descriptive Metadata
- > Interoperability with MXF from P2, XDCam & AVID

Applications

- > Intuitive and easy to use GUI
- > Cut/Edit Timeline
- > EDL CMX 3600 Import/Export functions
- > Advanced project management function
- > Batch ingest from a VTR
- > RS422 protocol

Architecture

- > PC Rack Server
- > Linux Operating system (Kernel 2.6)
- > XFS or Ext2 Linux File system
- > Delivered without storage (gateway mode) or with storage (*) (DDR mode)
- > NAS/SAN Connection

(*) Available as option

Specifications are subject to changes without prior notice. All trademarks are the property of their respective owners. © 2006 - OpenCube Technologies SAS, all rights reserved

OpenCube Technologies offers innovative advanced technology solutions for the television and film industries. The company's know-how in combining video, software and IT enables it to build robust, high-performance applications using MXF and HDTV standards to enhance production workflows and boost company productivity.