

Marshall

V-R44P-SDI Instruction Sheet

Broadcast Multimedia Division

<http://www.LCDRacks.com> • e-mail: sales@mars-cam.com

Introducing the worlds smallest 4-inch quad rackmount with SDI! The **V-R44P-SDI** is a rack mountable unit that offers four 4" high-resolution active matrix LCD panels. Each of the four 480 × 234 pixel screens has its own set of controls for color, tint, contrast, and brightness. Each panel also has an SDI input with loop through capability and a 10-bit D/A converter, a self-powered 3 color tally system and is switchable for NTSC or PAL formats. This unit is only 2 rack spaces high, and can be tilted up to 90 degrees while rack mounted, making it the smallest video monitoring system of it's kind. Like all of the V-R Series, this unit is constructed of steel and aluminum, and comes complete with power supply and owners manual.



The operation of the V-R44P-SDI is fairly straightforward, however, please take note of the following:

1. It is recommended to plug the video cables in **FIRST**, and then supply power to the unit.
2. The **V-R44P-SDI** has been designed to fit in a 3U space on your rack. **It is important to use 4 screws to hold the ears to the rack. Be certain that the ears are aligned vertically, this is important to the tilt function.** The auto signal detection will display a blue screen with the absence of a signal. The V-R44P-SDI has a memory function that will remember the settings of each monitor including power and channel selection *even if power has been disconnected from the unit.*
3. Each LCD Panel comes with a protective plastic film that must be removed by carefully lifting the film from the corner and peeling it off. Be certain not to apply any pressure on the LCD panels, they are fragile and can break. Scratched, cracked or broken LCD screens are not covered by our warranty.
4. The V-R44P-SDI uses **12VDC, 5.0 Amp** regulated power. Be certain that these specifications are met when using a power supply other than the one supplied to you by Marshall Electronics. The center pin on the coaxial power connector for the V-R44P-SDI is the **POSITIVE** terminal and the outside ring is **NEGATIVE**. Any battery operation of the V-R44P-SDI must have this polarity configuration.
5. The Digital inputs on the rear of the panel are 75 Ohm self-terminated. The loop through feature uses active components and is always active as long as power is supplied to the unit regardless of the monitor being On or Off. The V-R44P-SDI is also equipped with a 10-bit D/A convertor that converts the SDI input from that channel. This D/A convertor uses the SMPTE 259M standard and is relocked. To switch the unit from NTSC to PAL, use the switch located on the rear of the unit. Each screen can be individually switched to either format.



Rear View

Side View

Display	Viewing Area	Dot Pitch	Picture Elements	Inputs	Brightness	Dimensions	Power Consumption
4" LCD Active Matrix	3.23" × 2.43" each panel	0.171mm x 0.264mm	480H x 234V	1 SDI per panel	300 cd/m ²	19.125W x 3.43H x 2.0D	12 VDC 2.5 Amps

Marshall

6. The tally system on the V-R44P-SDI is accessed via the DB-15 connector on the back of the unit. The system works by closing the contacts between a ground pin and the corresponding LED pin. The system is self powered, **DO NOT GIVE POWER TO THE PINS**. The pinout is as follows:

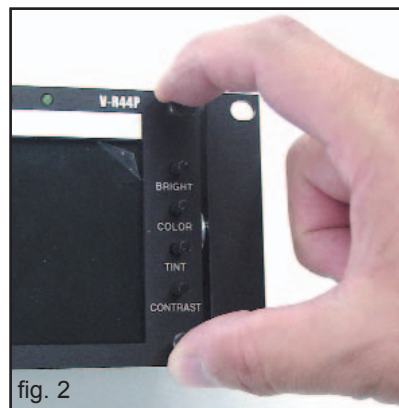
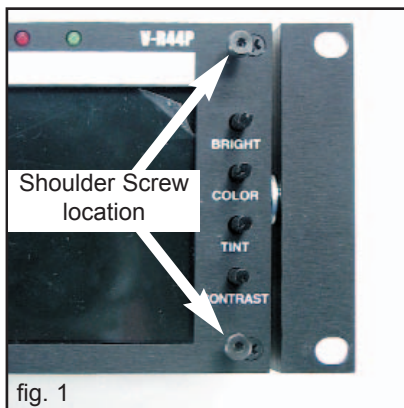
	Green	Red	Yellow
Monitor 1	Pin 1	Pin 2	Pin 3
Monitor 2	Pin 6	Pin 7	Pin 8
Monitor 3	Pin 11	Pin 12	Pin 13
Monitor 4	Pin 5	Pin 10	Pin 15

PINS 4, 9 and 14 are COMMON GROUNDS

7. Before the tilt function can work properly, it is important that the unit be mounted correctly in the rack using four screws and the ears properly aligned vertically.

The tilt function on the V-R44P-SDI is operated using the two shoulder screws located on each side of the unit as shown in fig. 1. By placing your index finger and thumb on each side as shown in fig. 2, the V-R44P-SDI can be tilted up or down. To tilt the unit up, place your thumb under the bottom screw and push on the top screw with your index finger. To tilt the unit down, place your index finger on top of the top screw and push the bottom screw with your thumb.

DO NOT PUSH ON THE GLASS PORTION OF THE SCREEN TO TILT THE UNIT.



Warranty

Marshall Electronics warrants to the first consumer, that this **V-R44P-SDI** rackmount monitor will, under normal use, be free from defects in workmanship and materials, when received in its original container, for a period of one year from the purchase date.

This warranty is extended to the first consumer only and proof of purchase is necessary to honor the warranty. If there is no proof of purchase provided with a warranty claim, Marshall Electronics reserves the right, not to honor the warranty set forth above. Therefore, labor and parts may be charged to you.

This warranty does not apply to product exterior and cosmetics. Misuse, abnormal service or handling, improper alterations or modifications in design or construction, voids this warranty.

No sales personnel of the seller, nor any other person is authorized to make any warranties other than those described above, or to extend the duration of any warranties on behalf of Marshall Electronics, beyond the time period described above.

Due to constant effort to improve products and product features, specifications may change without notice.