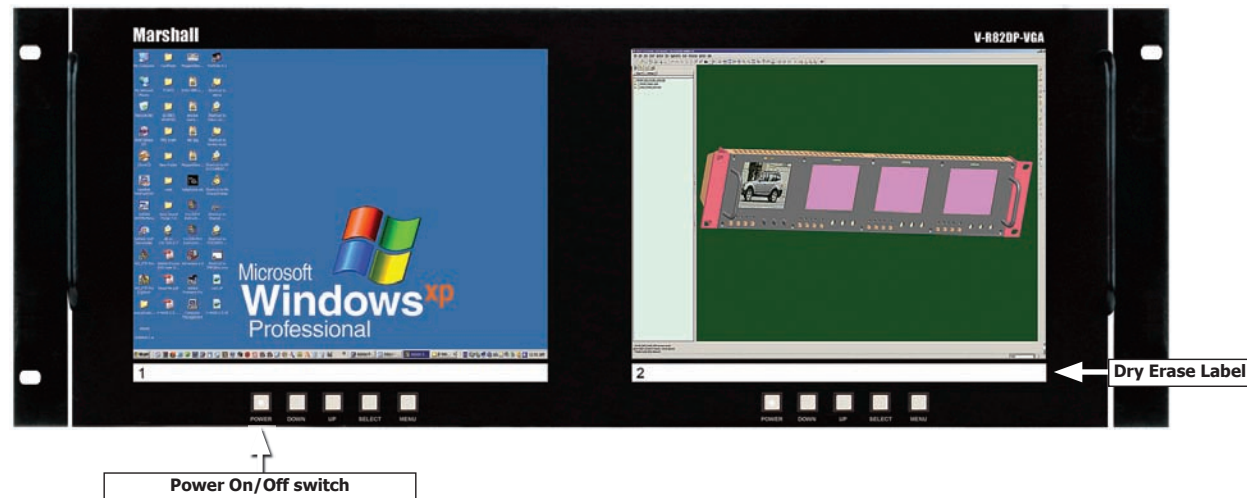


7 Switch Settings, Adjustments and Indicators



8 Menu Functions

Turn On/Off with **Menu** button.

Use **Up**, **Down** and **Select** for menu navigation functions:

Info
Brightness
Contrast
Vertical Position
Horizontal Position
Vertical Scale
Horizontal Scale

Info

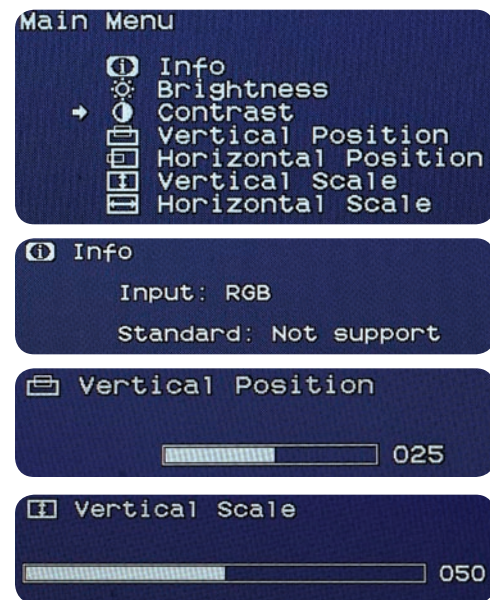
Indicates input source and standard

Vertical and Horizontal Position

Press **Up**, **Down** to navigate.
 Press **Select** to activate.
 Press **Left**, **Right** to change value.
 Press **Menu** to exit

Vertical and Horizontal Scale

Press **Up**, **Down** to navigate.
 Press **Select** to activate.
 Press **Left**, **Right** to change value.
 Press **Menu** to exit.

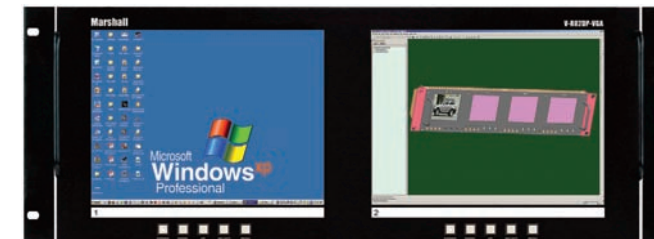


9 Warranty

Marshall Electronics warrants to the first consumer, that this VGA PRODUCT LINE 8.4-inch and 10.4-inch LCD rack mounted and stand alone monitor set will, under normal use, be free from defects in workmanship and materials, when received in its original container, for a period of one year from the purchase date. This warranty is extended to the purchasing end user only and proof of purchase is necessary to honor the warranty. If there is no proof of purchase provided with a warranty claim, Marshall Electronics reserves the right not to honor the warranty set forth above. Therefore, labor and parts may be charged to you. This warranty does not apply to product exterior and cosmetics. Misuse, abnormal service or handling, improper alterations or modifications in design or construction, voids this warranty. No sales personnel of the seller, nor any other person is authorized to make any warranties other than those described above, or to extend the duration of any warranties on behalf of Marshall Electronics, beyond the time period described above. An extra note about LCD displays: It is considered normal for a minimal amount of pixels, not to exceed three, to fail on the periphery of the display active viewing area. Marshall Electronics has the option to reserve service for display pixel failure if deemed unobtrusive to effective use of the monitor by our technicians. **Due to constant effort to improve products and product features, specifications may change without notice.**

Marshall Electronics

1910 East Maple Ave.
 El Segundo, CA 90245
 Tel.: 800-800-6608 • 310-333-0606
 Fax: 310-333-0688
www.LCDRacks.com
 Email: sales@lcdracks.com



VGA PRODUCT LINE Users Guide

Product Overview	1
Features	2
Electrical Specifications	3
Mechanical Specifications	4
Operational Setup	5
Connectors	6
Switch Settings, Adjustments and Indicators	7
Menu Functions	8
Warranty	9

1 Product Overview

Marshall Electronics VGA PRODUCT LINE represents leading edge technology in LCD imaging for computer, DVD-I and HDMI video applications featuring High Resolution, 1.44 megapixel, TFT screens with completely digital signal processing. All formats are scaled to fit on screen in the highest resolution using a state of the art LSI that incorporates 4x4 pixel interpolations with precision Gamma correction.

2 Features

- **TFT-MegaPixel™ totally digital end to end signal processing**
- **One VGA and One DVI-D input per screen with auto detect of source**
- **On screen display of input status, formats, and menu functions**
- **Inputs up to 1280x1024 (SXGA)**
- **Ready to mount – all brackets are factory installed**
- **Lightweight – 75% lighter than CRT models**
- **Menu control for screen adjustments and status.**
- **Adjustable Screen position**
- **Adjustable Image Size**
- **Includes universal power supply (U.L. class 2)**
- **Unique 180 degree tilt adjustment**
- **Dry erase label for each screen**

3 Electrical Specifications for 8.4-inch Screens

Screen Aspect	4:3
Display (Viewing Area)	8.4 Inch diagonal (170.4mm W x 127.8mm H)
Viewing Angles	160° with protective screen and treatment (130° H x 120° V native)
Resolution (RGB Dots)	800H×RGBx600V (1.44 million pixels)
Dot Pitch	.213mm square pixel
Contrast Ratio	500:1
Pixel Response	10ms rise / 25ms fall
Brightness (in cd/m ²)	500 cd/m ²
Backlight	Field Replaceable CCFL (50,000 hour half life)
LCD Screen Treatments	Anti Reflection, Anti Glare, Hard Coat
Estimated MTBF	5 years of 24/7/365 operation
Inputs	1 SXGA-VGA (HD-15) or DVI-D (DVI-27 Pin) per screen
Color temperature	D65 (6500° Kelvin)
Color Gamut	CIE 1931
Luma Linearity	Typical +/- 3% with 5 ire increments (0 to 10 ire)
Power Required	10.4 to 16.8 VDC
Power Consumption	Approx. 20 watt nominal
Operating temperature	32°F to 120°F (0°C to 50°C)
Storage temperature	-4°F to 120°F (-20°C to 50°C)
Compliance	CE, FCC-Class A, ANSI-63.4 (Certificates on file)
RoHS WEE / Environmental	Do not dispose. Return to Manufacturer or Authorized Recycle Facility

Electrical Specifications for 10.4-inch Screens

Screen Aspect	4:3
Display (Viewing Area)	10.4 Inch diagonal (211.2mm W x 158.4mm H)
Viewing Angles	160° with protective screen and treatment (130° H x 120° V native)
Resolution (RGB Dots)	800H×RGBx600V (1.44 million pixels)
Dot Pitch	.264mm square pixel
Contrast Ratio	500:1
Pixel Response	10ms rise / 25ms fall
Brightness (in cd/m ²)	500 cd/m ²
Backlight	Field Replaceable CCFL (50,000 hour half life)
LCD Screen Treatments	Anti Reflection, Anti Glare, Hard Coat
Estimated MTBF	5 years of 24/7/365 operation

Inputs	1 SXGA-VGA (HD-15) or DVI-D (DVI-27 Pin) per screen
Color temperature	D65 (6500° Kelvin)
Color Gamut	CIE 1931
Luma Linearity	Typical +/- 3% with 5 ire increments (0 to 10 ire)
Power Required	10.4 to 16.8 VDC
Power Consumption	Approx. 3.0 watt nominal
Operating temperature	32°F to 120°F (0°C to 50°C)
Storage temperature	-4°F to 120°F (-20°C to 50°C)
Compliance	CE, FCC-Class A, ANSI-63.4 (Certificates on file)
RoHS WEE / Environmental	Do not dispose. Return to Manufacturer or Authorized Recycle Facility

4 Mechanical Specifications for V-R82DP-VGA

Dimensions	19.12" w x 7.0" h x 1.5" d (485.7mm x 177.8mm x 38.1mm)
V-R82DP-VGA Weight	5 lbs (2.4 kg)
V-PS12-5V-1 Power Supply Weight	1 lbs (0.45kg)

Mechanical Specifications for V-R102DP-VGA

Dimensions	19.12" w x 8.67" h x 1.5" d (485.7mm x 220.22mm x 38.1mm)
V-R102DP-VGA Weight	6.5 lbs (3.0 kg)
V-PS12-5V-1 Power Supply Weight	1 lbs (0.45kg)

Mechanical Specifications for V-R84DP-VGA

Dimensions	10.25" w x 7" h x 2.5" d (260.4mm x 215.9mm x 38.1mm)
V-R84DP-VGA Weight	5.5 lbs (2.4 kg)
V-PS12-5V Power Supply Weight	1 lbs (0.45kg)

Mechanical Specifications for V-R104DP-VGA

Dimensions	10.25" w x 8.5" h x 2.5" d (260.4mm x 215.9mm x 38.1mm)
V-R104DP-VGA Weight	6.5 lbs (3.0 kg)
V-PS12-5V Power Supply Weight	1 lbs (0.45kg)

5 Operational Setup

1. Unpack the VGA PRODUCT and accompanying power supply. Physically inspect for any damage that may have occurred during shipping. Should there be any damage, immediately contact Marshall Electronics at 800-800-6608. If you are not located within the continental united states call +1 310-333-0606.
2. After inspection, install in your desired location of a standard EIA 19-inch equipment rack. Adequate ventilation is required when installed to prevent possible damage to the VGA PRODUCT LINE internal components.
3. Connect required cables for signal input and output. Plug power supply into the A.C. source.
4. Attach power supply to the back of the unit.
5. Turn on by depressing the power switch located on the front of the unit.

6 Connectors

