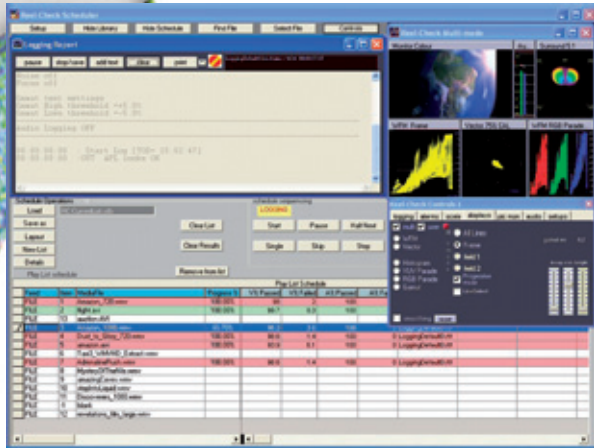


QUALITY CONTROL SOFTWARE FOR FILE BASED CONTENT

NEW



Reel-Check™

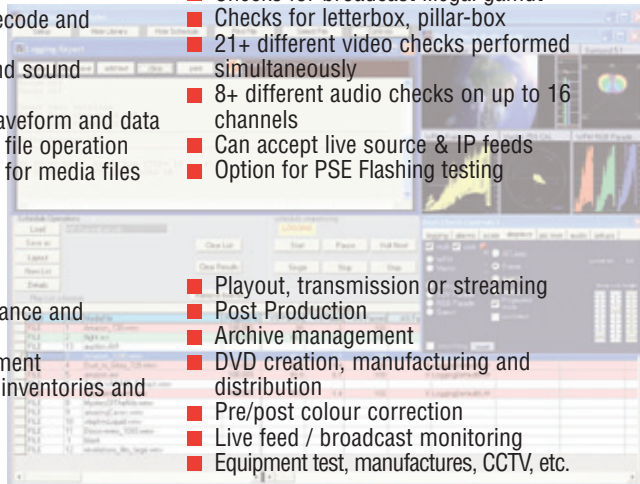
AUTOMATED QUALITY CONTROL, File based or live media QC and monitoring software with full logging facilities and library management.

Features and Functions

- SD & HD media files in most formats
- Batched operation of any number of sources
- Log reports with timecode and thumbnails
- Video, audio, surround sound parameters
- Monitors pictures, waveform and data
- Multiple watch folder file operation
- Sequential schedules for media files
- Metadata decoding & logging
- Full results automatic emailer
- Checks for broadcast illegal gamut
- Checks for letterbox, pillar-box
- 21+ different video checks performed simultaneously
- 8+ different audio checks on up to 16 channels
- Can accept live source & IP feeds
- Option for PSE Flashing testing

Typical Applications

- Quality Control
- Broadcasters' compliance and standards
- Media asset management
- Reviewing media file inventories and manifests
- Ingest facilities
- Rushes evaluation
- Playout, transmission or streaming
- Post Production
- Archive management
- DVD creation, manufacturing and distribution
- Pre/post colour correction
- Live feed / broadcast monitoring
- Equipment test, manufactures, CCTV, etc.



Reel-Check is a suite of Windows programs that run on a standard PC without special hardware. It performs a complete set of quality control tests on any audio/video media content. The software is designed to operate either automatically or be run under direct user control and can be used as a networked facility.

The program can work with all professional video formats. These uncompressed component types, RGB, standard and high definition types. Most any compressed types can be checked, subject to a suitable Codec being available. Embedded audio, stereo or multi-channel surround-sound, can be extracted and checked alongside the video for audible or visual impairments on a frame by frame basis.

Reel-Check is capable automated checking ingested or finished file content on local or network drives. A watch folder facility allows any network user with access to the folder the ability to queue a programme for test. Reel-Check has a scheduler of tasks that interactively manages the overall function and summarises the eventual results. There can be any number watch folders as required by the operator for convenience.

The user can set a table of the test parameters and tolerances, and any excursions outside these defined limits are logged with associated timecodes and detail notes. Also a thumbnail image at the time of detected events can be inserted in the RTF-formatted log. The tests can either be applied globally to all sources in the schedule or individually set for each item. These settings can be automated to be specific to each watch folder set up by the operator.

The log file for each item is stored on the Reel-Check's host computer for subsequent scrutiny or printing. Optionally, these can be sent automatically as email attachments to whoever needs to see the results. Reel-Check logs can be easily further edited in 'Word' or any other common word processor as required. There is also a summary log generated with all the pass/fail results from all the items in the schedule's batch.

As well as standard video and audio measurements, a series of additional parameters can be checked as the need arises. It can read the associated metadata linked to a media file and check its accuracy against the content. Running times, aspect ratios, sound formats and so on can be confirmed, with the results reported back.

The PSE (Photo Sensitive Photoepilepsy) option allows any video content to be screened for potential PSE hazards simultaneously with any other tests. This checks to recommendations BT-1702 for Luminance and Red flashes and recognises when spatial patterns are present that could be a problem.

VIDEO CHECKS

- Gamut checks
- Black frames
- APL Average Picture Level
- Blocking artifacts
- Stuck frames
- Odd Frames
- Cuts detection
- Quantisation
- Noise
- Focus

- Pixel format
- Letter Box detection
- Pillar Box detection
- White Balance shifts
- Colour Bars
- TC discontinuities
- Interlace Present
- Half Lines
- Aspect ratio
- Monochrome
- Flashes (Option)

AUDIO CHECKS

- Over Loud
- Silences
- Out of Phase channels
- Stereo balance
- Audio format
- Tone detection
- Hum Detection
- Click detection