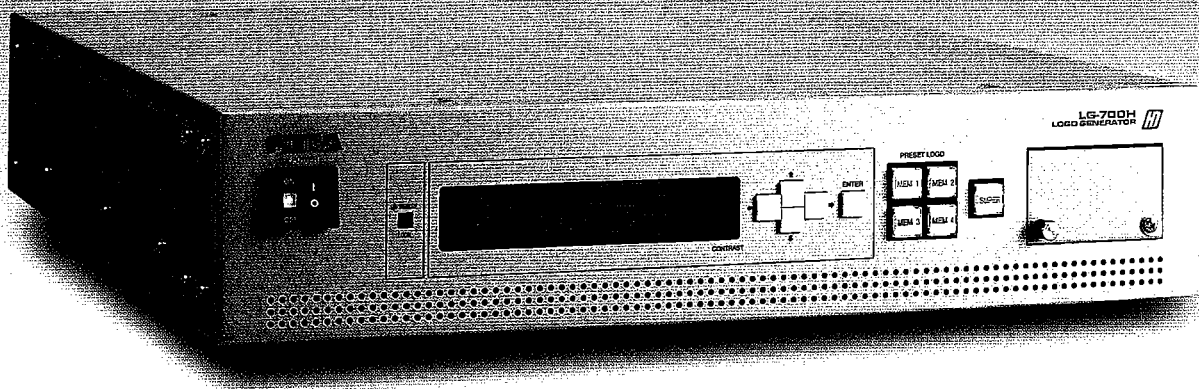
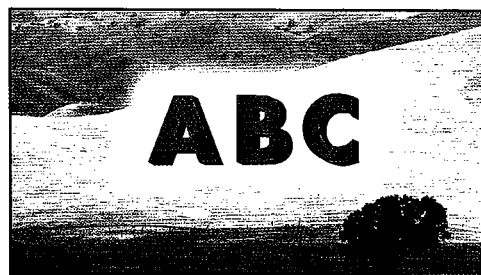


HDTV Logo Generator

LG-700H *HD*



HD SDI digital signal logo generator with Compact Flash™ card drive and Windows software to convert computer designed graphics to eye catching color logos. Up to 99 logos can be set up with logo ID for instant recall.



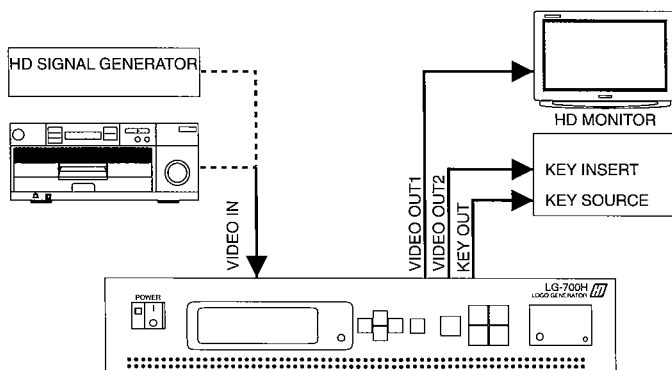
Features

- ◆ Automatically switches between 1080i and 1035i input formats.
- ◆ Quick preset recall and display of logos stored to memory.
- ◆ Display logos having hard or varying transparency elements.
- ◆ BMP file graphics easily converted to logo data with conversion software.
- ◆ Easy to use operational menus.
- ◆ Design logos in any BMP file compatible graphics software prior to conversion.
- ◆ Store commonly used production logos to Compact Flash™ card for fastest access.
- ◆ Video input bypassed to other system equipment when power switched OFF.
- ◆ Selectable local/remote control of logo display operation.

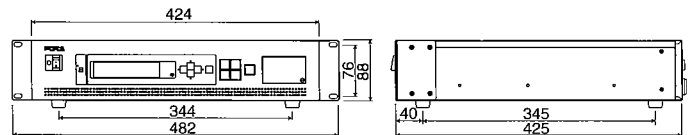
Specifications

Television Standard	1920 x 1080/59.94i or 60i, 1920 x 1035/59.94i or 60i (auto selected), 2:1 interlace	Front Panel	Super button, MEM1- 4 (quick recall) buttons, Remote /Local switch, Card drive (for Compact Flash™ card w/ logo data), LCD Menu Display (16 x 2 alphanumeric character)
Video Input	HD SDI 1.485/1.001Gbps, 75Ω, BNC, 1ea.	Conversion Software	IBM-AT or compatible computer, Pentium MMX133MHz or faster processor, 64MB RAM open, 100MB min. open HD space
Outputs		User PC	Microsoft Windows 95-later or Microsoft NT version 4.0 w/service pack 3-later
Video	HD SDI 1.485/1.001Gbps, 75Ω, BNC, 2ea.	User OS	Compact Flash card writer
Key	HD SDI 1.485/1.001Gbps, 75Ω, BNC, 1ea.	User other	Approx. 60VA
Active	SDI monitor output, BNC, 1 ea.	Consumption	100-240VAC, 50/60Hz
Monitor	15-pin mini D-sub (male), 1 ea.	Dimensions	424 (W) x 88 (H) x 425 (D) mm, EIA 2RU
Input/Output Delay	Approx. 2μsec.	Weight	Approx. 8kg
Logo Memory		Standard Accessory	Compact Flash™ card for checkout (32MB), conversion software, AC cable, rack mount brackets
Card	256 max. per card (based on Compact Flash™ card capacity/logo size),		
Display	99 max. (based on logo size) with ID in logo file		
Interfaces			
Remote	TTL negative logic pulse or make contact pulse, over 100msec pulse width / open collector, negative logic, tally output; 25-pin D-sub connector, female.		
RS-232C	9600bps, no parity, 1 stop bit, 9-pin D-sub connector, female		

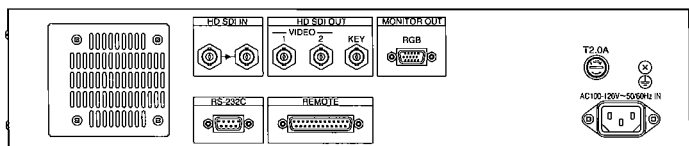
System



External Dimension



Rear Panel



FOR-A COMPANY LTD.

Head Office : 3-1-7 Ebisu, Shibuya-ku, Tokyo 150-0013, Japan
 FOR-A UK Limited : Heritage House, 21 Inner Park Rd., London SW19 6ED, UK
 FOR-A Italia S.r.l. : Viale Europa 50 20093, Cologno Monzese (MI), Milan, Italy
 FOR-A America Head Office : 2400 N.E. Waldo Road, Gainesville, FL 32609, U.S.A.
 FOR-A Los Angeles Office : 11125 Knott Ave., Cypress, CA 90630, U.S.A.
 FOR-A Corporation of Canada : 425 Queen St. W. #210, Toronto, Ontario M5V 2A5, Canada
 FOR-A Beijing Office : Rm 1802, Tower 1, Henderson Ctr., 18 Jianguomennei Ave., Beijing, China

Homepage: <http://www.for-a.co.jp/>

+81 (0)3-3446-3936, Fax : +81 (0)3-3446-1470
 +44 (0)181-788-7664, Fax : +44 (0)181-788-7435
 +39 02-254-3635/6, Fax : +39 02-254-0477
 +1 352-371-1505, Fax : +1 352-378-5320
 +1 714-894-3311, Fax : +1 714-894-5399
 +1 416-977-0343, Fax : +1 416-977-0657
 +86 (0)10-6518-3865, Fax : +86 (0)10-6518-3866