

HD-SDI · SDI · DVI TO DVI CONVERTER



HDVI-20

Advanced Image Processing

Spatial Interpolation

Clear and sharp rendition of static images

Advanced De-Interlace Processing

Clear, accurate output of moving images

Temporal Processing

Smoother frame rate conversion

60Hz, 50Hz and 48Hz Output

Matches input frame rate and minimizes artifacts

Auto-Sized Output

Matches the connected display size without affecting the aspect ratio

True 1080i Output

True 1080i video output with any input

HIGHLIGHTS

SDI / HD-SDI Video Interface for Displays and Projectors

Display SDI and high definition HD-SDI video on monitors and projectors with DVI inputs

DVI to DVI Resolution and Frame Rate Converter

The HDVI acts as a bridge between incompatible DVI equipment

Analog RGB to DVI Converter

Convert analog RGB sources to DVI and match the output frame rate and resolution to the connected display

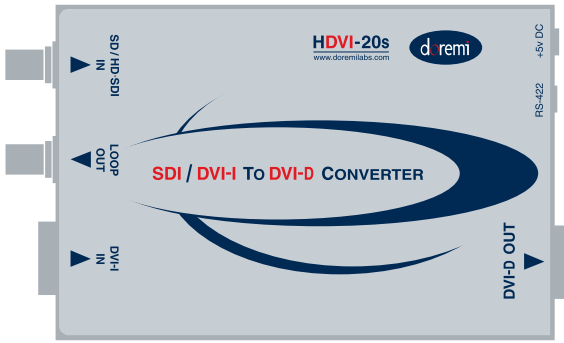
4:4:4 12 bit Input via Dual-link HD-SDI

HDVI-20d adds dual-link HD-SDI input for applications that require high color precision

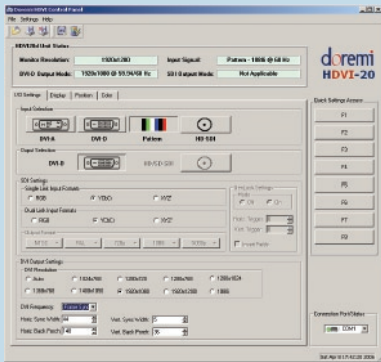
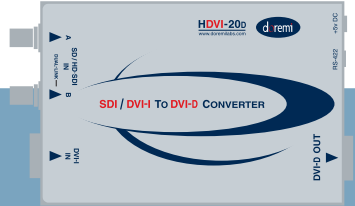
Color Space Conversion

HD-SDI input supports RGB, YCbCr and XYZ' color space

The HDVI-20s



The HDVI-20d with dual-link 4:4:4 HD-SDI input



HDVI Software Utility



IR Remote

Infrared Remote

Full function infrared remote controls the HDVI's on-screen display (OSD).

Control Software

The control software for the HDVI converter provides all the functions accessible via the IR remote. The software also features a downloadable look up table (LUT).

Downloadable Look Up Table (LUT)

Available from the HDVI control software. Preset LUT are also included.

Input Switcher

Use the IR remote or the control software to switch between the SDI/HD-SDI or the DVI-I input.

SPECIFICATIONS

INPUT

- SDI - SMPTE 259M-C (270Mb/s)
- HD-SDI - SMPTE 292M (1.485, 1.485/1.001 Gb/s)
- DVI-D (via DVI-I connector)

Analog RGB-HV (via DVI-I connector)

Requires a RGB to DVI-I breakout cable. Not included
Dual-Link HD-SDI 4:4:4 SMPTE 372M (HDVI-20d only)

NTSC, PAL

- 720p 60, 59.94, & 50Hz
- 1080i / 1080p 30, 29.97, 25, 24 & 23.98Hz
- 2048x1080p & sf 24 & 23.98Hz

DVI and Analog RGB-HV:

Interlaced and Progressive Sources up to 1920x1200
Pixel clock must not exceed 165 MHz

OUTPUT

- DVI-D (Digital RGB) - Female, compliant to DVI 1.0
- Resolutions up to 1920x1200 (48, 50 and 60Hz)
- Loop out for the HD-SDI / SDI inputs (HDVI-20s only)

Auto detects connected monitor resolution

Auto Mode: Outputs at 48, 50, or 60Hz

Frame Sync Mode: Outputs at the input frame rate

SUPPORTED DISPLAY RESOLUTIONS

The HDVI-20 supports most DVI resolutions. Below are a few:
1024x768 / 1280x720 / 1280x768 / 1280x1024
1400x1050 / 1600x1200 / 1920x1080 / 1920x1200

INTERFACE

On-Screen Display (OSD) with infrared remote control

OTHER

RS-422 for remote control and firmware upgrades

GENERAL

- 5 volts (screw-on connector)
- External Adapter: 100-240VAC 50-60Hz
- 5.4" x 3.7" x 1" (138mm x 93mm x 24mm)

ORDERING INFO

- HDVI-20s DVI Converter with SDI/HD-SDI input and loop through
- HDVI-20d DVI Converter with dual-link HD-SDI input



Doremi Labs, Inc. Headquarters Burbank, California USA - tel 1 (818) 562 1101 - www.doremilabs.com

Doremi Labs, Europe Sophia Antipolis, France - tel +33 (0)492 95 2830 - www.doremilabs.fr

Doremi Labs, Japan Tokyo, Japan - tel +81 (0)3 3327 5735 - www.doremilabs.co.jp