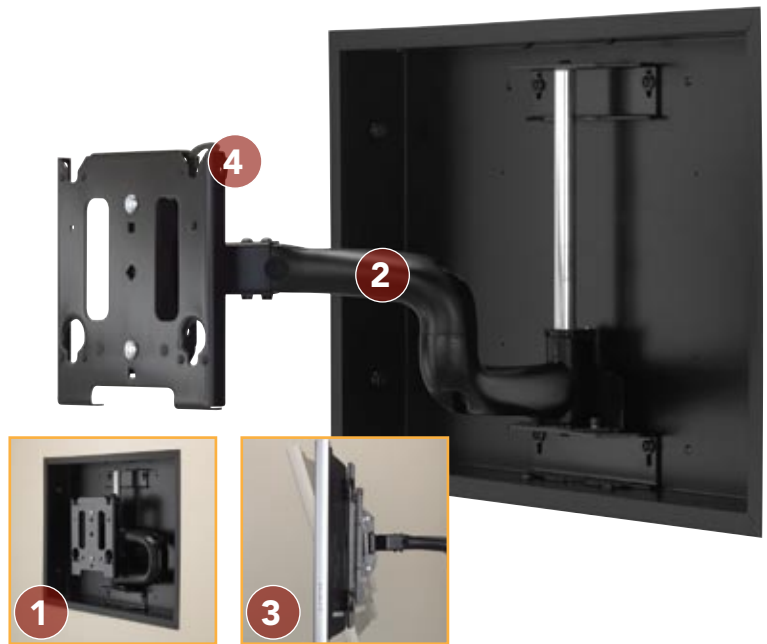




### FEATURES

- 1 LOW PROFILE**  
Designed to ensure mount remains concealed behind the screen.
- 2 SMOOTH EXTENSION**  
Contoured swing arms are designed for effortless extension of 22" (559 mm).
- 3 CENTRIS™ FINGERTIP TILT**  
Effortlessly adjust display using Centris fingertip tilt technology. Screen angle stays set until you decide to re-adjust.
- 4 CLICKCONNECT™ TECHNOLOGY**  
**PATENT-PENDING**  
An audible click confirms flat panels are locked in place. Easy to connect/disconnect - no tools needed! Protect display by adding a padlock.



### SPECIFICATIONS

Roll	+/-2°
Tilt	15°
Swivel*	60° Left/Right
Extension Range	.5" - 22" (13 - 559 mm)
Box Dimensions (HxWxD)	20" x 30" x 3.63" (508 x 762 x 92 mm)
Color	Black
Weight Capacity	125 lbs (56.7 kg)

\* With 42" flat panel. Swivel range varies with screen size.

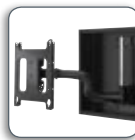
### WHAT YOU NEED TO KNOW

#### ORDERING INFORMATION

PAC501 and MWRIW must be ordered separately. Available in Universal or Custom:

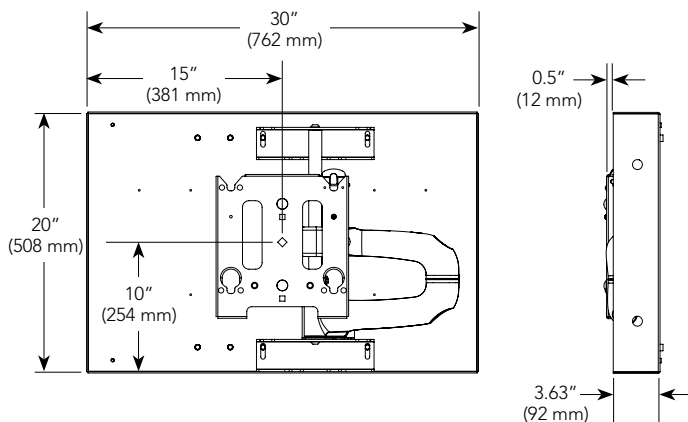
- **UNIVERSAL:** Order PAC501 and MWRIWUB
- **CUSTOM:** Order PAC501, MWRIW6000B + PSB-xxxx  
See MountFinder™ PRO on [www.chiefmfg.com](http://www.chiefmfg.com) for custom PSB model numbers.

#### OTHER PRODUCT OPTIONS



**PAC501™ & MWRIW™**  
In-Wall Box Accessory and Swing Arm Mount

### TECHNICAL DRAWINGS



### RECOMMENDED ACCESSORIES



**PACHFK1** ■ Header/Footer Kit



**PACCC1** ■ Center Channel Speaker Adapter



**PACPC1** ■ Power Filter

For a complete list of flat panel mount accessories see page 69.